

Grayson County College
Program Completer and Graduate Survey – 2004-2005
Statistics and Comments

Robin Huskey
Director of Institutional Effectiveness
Grayson County College

July 7, 2005

Program Completer and Graduate Survey 2004-2005

Response Rate: 209/650 = 32.1%

II. Please rate each of the following items according to how well they fulfilled your individual needs:

	Very Good		Good		Average		Poor		Very Poor		No Opinion		Total	
	Count	%	Count	%	Count	%	Count	%	Count	%	Count	%	Count	%
Quality of instruction	109	52.2	76	36.4	21	10.0	2	1.0	1	.5	0	.0	209	100.0
Grading/Testing	75	35.9	97	46.4	33	15.8	3	1.4	1	.5	0	.0	209	100.0
Instructor interest	110	52.6	76	36.4	21	10.0	1	.5	1	.5	0	.0	209	100.0
Content of course(s) in major	92	44.2	84	40.4	27	13.0	4	1.9	0	.0	1	.5	208	100.0
Usefulness of course(s) in major	92	44.0	80	38.3	33	15.8	3	1.4	0	.0	1	.5	209	100.0
Class size	94	45.2	88	42.3	24	11.5	2	1.0	0	.0	0	.0	208	100.0
Laboratory components in courses	64	30.9	80	38.6	45	21.7	6	2.9	3	1.4	9	4.3	207	100.0
Helpfulness of lab supervisors	76	36.7	69	33.3	44	21.3	4	1.9	4	1.9	10	4.8	207	100.0
Quality of equipment	52	25.0	82	39.4	51	24.5	13	6.3	5	2.4	5	2.4	208	100.0
Quantity of equipment	56	26.9	78	37.5	49	23.6	15	7.2	7	3.4	3	1.4	208	100.0
Availability of needed courses	75	36.1	91	43.8	34	16.3	5	2.4	1	.5	2	1.0	208	100.0
Content of required courses outside major	61	29.8	88	42.9	33	16.1	3	1.5	0	.0	20	9.8	205	100.0
Usefulness of required courses outside major	63	30.6	70	34.0	49	23.8	4	1.9	0	.0	20	9.7	206	100.0

III. If you used any of the College services listed below, please rate the quality of service accordingly:

	Very Good		Good		Average		Poor		Very Poor		No Opinion		Total	
	Count	%	Count	%	Count	%	Count	%	Count	%	Count	%	Count	%
Career Planning and Placement	33	25.2	30	22.9	13	9.9	1	.8	1	.8	53	40.5	131	100.0
Academic Transfer	36	29.8	30	24.8	6	5.0	3	2.5	1	.8	45	37.2	121	100.0
Transfer Counseling	33	26.8	27	22.0	8	6.5	4	3.3	0	.0	51	41.5	123	100.0
Assessment and Testing	32	24.8	48	37.2	17	13.2	1	.8	4	3.1	27	20.9	129	100.0
Learning Labs/Tutorial Services	43	29.5	46	31.5	17	11.6	1	.7	3	2.1	36	24.7	146	100.0
Library Services	60	38.5	54	34.6	21	13.5	1	.6	1	.6	19	12.2	156	100.0
Financial Aid/Veterans Affairs	52	32.1	41	25.3	23	14.2	5	3.1	5	3.1	36	22.2	162	100.0
Food Services	23	16.8	28	20.4	27	19.7	7	5.1	4	2.9	48	35.0	137	100.0
Registrars/Admission Office	67	36.4	85	46.2	26	14.1	3	1.6	2	1.1	1	.5	184	100.0
Bookstore	56	28.3	89	44.9	39	19.7	10	5.1	2	1.0	2	1.0	198	100.0
Business Services	38	25.9	55	37.4	17	11.6	3	2.0	1	.7	33	22.4	147	100.0
Student Activities	22	17.5	29	23.0	21	16.7	4	3.2	2	1.6	48	38.1	126	100.0
Handicapped Services	15	13.3	14	12.4	5	4.4	3	2.7	1	.9	75	66.4	113	100.0
Intramurals	12	11.1	14	13.0	6	5.6	1	.9	1	.9	74	68.5	108	100.0
Student Employment	15	13.4	14	12.5	8	7.1	4	3.6	0	.0	71	63.4	112	100.0
Development Education	23	19.7	20	17.1	10	8.5	0	.0	1	.9	63	53.8	117	100.0

IV. Please rate each of the following items according to the effects your education at GCC had on your life:

	Very Good		Good		Average		Poor		Very Poor		No Opinion		Total	
	Count	%	Count	%	Count	%	Count	%	Count	%	Count	%	Count	%
Obtaining my job	42	25.0	36	21.4	20	11.9	4	2.4	0	.0	66	39.3	168	100.0
Improving my performance on the job	50	29.4	44	25.9	20	11.8	1	.6	0	.0	55	32.4	170	100.0
Increasing my opportunities for job advancement	70	39.5	54	30.5	15	8.5	2	1.1	1	.6	35	19.8	177	100.0
Overall usefulness to my job	61	35.7	45	26.3	17	9.9	3	1.8	1	.6	44	25.7	171	100.0
Understanding the world in which I live	51	28.7	60	33.7	43	24.2	1	.6	1	.6	22	12.4	178	100.0
Communicating with others	64	35.6	66	36.7	33	18.3	0	.0	0	.0	17	9.4	180	100.0
Improving my thinking skills	73	40.3	69	38.1	24	13.3	1	.6	0	.0	14	7.7	181	100.0
Pursuing additional education	82	45.8	58	32.4	18	10.1	2	1.1	0	.0	19	10.6	179	100.0
Learning on my own	68	37.8	76	42.2	20	11.1	1	.6	1	.6	14	7.8	180	100.0
Improving my self-image	68	37.6	66	36.5	22	12.2	2	1.1	0	.0	23	12.7	181	100.0
Improving my performances as a citizen	63	36.0	52	29.7	32	18.3	0	.0	0	.0	28	16.0	175	100.0
Improving the quality of my life	78	42.6	63	34.4	21	11.5	3	1.6	1	.5	17	9.3	183	100.0

Program Completer and Graduate Survey 2004-2005

Primary objective at GCC?

		Frequency	Percent	Valid Percent	Cumulative Percent
Valid	Not Answered	18	8.6	8.6	8.6
	Associate Degree	128	61.2	61.2	69.9
	Credits for transfer	10	4.8	4.8	74.6
	Certificate of Completion	29	13.9	13.9	88.5
	Personal development	7	3.3	3.3	91.9
	To get a job	6	2.9	2.9	94.7
	To improve skills for current job	3	1.4	1.4	96.2
	To get a better job	5	2.4	2.4	98.6
	Other	3	1.4	1.4	100.0
	Total	209	100.0	100.0	

Current employment status:

		Frequency	Percent	Valid Percent	Cumulative Percent
Valid	Employed	113	54.1	59.8	59.8
	Full-time military	3	1.4	1.6	61.4
	Unemployed seeking employment	56	26.8	29.6	91.0
	Unemployed not seeking employment	17	8.1	9.0	100.0
	Total	189	90.4	100.0	
Missing	Not Answered	20	9.6		
Total		209	100.0		

Job related to program at GCC?

		Frequency	Percent	Valid Percent	Cumulative Percent
Valid	Yes, it is directly or closely related	59	28.2	47.6	47.6
	No, it is only remotely or not at all related	65	31.1	52.4	100.0
	Total	124	59.3	100.0	
Missing	Not Answered	85	40.7		
Total		209	100.0		

First secured employment in current field:

		Frequency	Percent	Valid Percent	Cumulative Percent
Valid	Do not yet have a job	68	32.5	39.5	39.5
	Before I began my GCC coursework	47	22.5	27.3	66.9
	After I had completed a few courses at GCC	25	12.0	14.5	81.4
	During my last term at GCC	9	4.3	5.2	86.6
	After I received my degree at GCC	23	11.0	13.4	100.0
	Total	172	82.3	100.0	
Missing	Not Answered	37	17.7		
Total		209	100.0		

Program Completer and Graduate Survey 2004-2005

Job unrelated to GCC program because:

		Frequency	Percent	Valid Percent	Cumulative Percent
Valid	Not sufficiently qualified for a job in my field	22	10.5	21.4	21.4
	Preferred to work in another field	8	3.8	7.8	29.1
	Found a better paying job in another field	6	2.9	5.8	35.0
	Could not find a job in my field	6	2.9	5.8	40.8
	Worked previously in field, but changed	4	1.9	3.9	44.7
	Not currently employed	36	17.2	35.0	79.6
	Other	21	10.0	20.4	100.0
	Total	103	49.3	100.0	
Missing	Not Answered	106	50.7		
Total		209	100.0		

Availability of jobs in occupational area

		Frequency	Percent	Valid Percent	Cumulative Percent
Valid	Very Good	38	18.2	23.0	23.0
	Good	54	25.8	32.7	55.8
	Average	55	26.3	33.3	89.1
	Poor	13	6.2	7.9	97.0
	Very Poor	5	2.4	3.0	100.0
	Total	165	78.9	100.0	
Missing	Not Answered	44	21.1		
Total		209	100.0		

Satisfied with current salary?

		Frequency	Percent	Valid Percent	Cumulative Percent
Valid	Very Satisfied	22	10.5	13.1	13.1
	Somewhat Satisfied	64	30.6	38.1	51.2
	Somewhat Dissatisfied	25	12.0	14.9	66.1
	Very Dissatisfied	9	4.3	5.4	71.4
	Not currently employed	48	23.0	28.6	100.0
	Total	168	80.4	100.0	
Missing	Not Answered	41	19.6		
Total		209	100.0		

Sex

		Frequency	Percent	Valid Percent	Cumulative Percent
Valid	Male	56	26.8	29.5	29.5
	Female	134	64.1	70.5	100.0
	Total	190	90.9	100.0	
Missing	Not Answered	19	9.1		
Total		209	100.0		

Program Completer and Graduate Survey 2004-2005

Race

		Frequency	Percent	Valid Percent	Cumulative Percent
Valid	American Indian	5	2.4	2.6	2.6
	Black	21	10.0	11.1	13.7
	Hispanic	9	4.3	4.7	18.4
	White	155	74.2	81.6	100.0
	Total	190	90.9	100.0	
Missing	Not Answered	19	9.1		
Total		209	100.0		

Age

		Frequency	Percent	Valid Percent	Cumulative Percent
Valid	18 to 22	76	36.4	40.0	40.0
	23 to 25	9	4.3	4.7	44.7
	26 to 30	15	7.2	7.9	52.6
	31 to 40	39	18.7	20.5	73.2
	41 to 50	34	16.3	17.9	91.1
	51 to 60	17	8.1	8.9	100.0
	Total	190	90.9	100.0	
Missing	Not Answered	19	9.1		
Total		209	100.0		

Program Completer and Graduate Survey 2004-2005

Student Ratings By Ranking of Mean Scores, Scale: 1=Very Good to 5=Very Poor

II. Please rate each of the following items according to how well they fulfilled your individual needs:

	N	Mean	Std. Deviation
Instructor interest	209	1.60	.728
Quality of instruction	209	1.61	.746
Class size	208	1.68	.712
Content of course(s) in major	207	1.72	.761
Usefulness of course(s) in major	208	1.75	.772
Grading/Testing	209	1.84	.771
Availability of needed courses	206	1.86	.809
Content of required courses outside major	185	1.88	.750
Helpfulness of lab supervisors	197	1.94	.935
Usefulness of required courses outside major	186	1.97	.831
Laboratory components in courses	198	2.01	.901
Quality of equipment	203	2.20	.975
Quantity of equipment	205	2.21	1.035
Valid N (listwise)	170		

III. If you used any of the College services listed below, please rate the quality of service accordingly:

	N	Mean	Std. Deviation
Academic Transfer	76	1.72	.873
Library Services	137	1.75	.793
Transfer Counseling	72	1.76	.864
Career Planning and Placement	78	1.81	.854
Development Education	54	1.81	.870
Registrars/Admission Office	183	1.84	.807
Learning Labs/Tutorial Services	110	1.86	.903
Business Services	114	1.89	.813
Financial Aid/Veterans Affairs	126	1.97	1.058
Intramurals	34	1.97	.969
Handicapped Services	38	1.97	1.052
Assessment and Testing	102	1.99	.939
Student Employment	41	2.02	.987
Bookstore	196	2.05	.885
Student Activities	78	2.17	.986
Food Services	89	2.34	1.087
Valid N (listwise)	22		

Program Completer and Graduate Survey 2004-2005

Student Ratings By Ranking of Mean Scores, Scale: 1=Very Good to 5=Very Poor

IV. Please rate each of the following items according to the effects your education at GCC had on your life:

	N	Mean	Std. Deviation
Pursuing additional education	160	1.63	.733
Increasing my opportunities for job advancement	142	1.66	.780
Improving the quality of my life	166	1.71	.802
Improving my thinking skills	167	1.72	.727
Overall usefulness to my job	127	1.72	.842
Improving my self-image	158	1.73	.744
Learning on my own	166	1.74	.738
Improving my performance on the job	115	1.76	.768
Improving my performances as a citizen	147	1.79	.778
Communicating with others	163	1.81	.750
Obtaining my job	102	1.86	.868
Understanding the world in which I live	156	1.98	.831
Valid N (listwise)	86		

Program Completer and Graduate Survey 2004-2005

No Opinion and Not Answered Removed

II. Please rate each of the following items according to how well they fulfilled your individual needs:

	Very Good		Good		Average		Poor		Very Poor		Total	
	Count	%	Count	%	Count	%	Count	%	Count	%	Count	%
Quality of instruction	109	52.2	76	36.4	21	10.0	2	1.0	1	.5	209	100.0
Grading/Testing	75	35.9	97	46.4	33	15.8	3	1.4	1	.5	209	100.0
Instructor interest	110	52.6	76	36.4	21	10.0	1	.5	1	.5	209	100.0
Content of course(s) in major	92	44.4	84	40.6	27	13.0	4	1.9	0	.0	207	100.0
Usefulness of course(s) in major	92	44.2	80	38.5	33	15.9	3	1.4	0	.0	208	100.0
Class size	94	45.2	88	42.3	24	11.5	2	1.0	0	.0	208	100.0
Laboratory components in courses	64	32.3	80	40.4	45	22.7	6	3.0	3	1.5	198	100.0
Helpfulness of lab supervisors	76	38.6	69	35.0	44	22.3	4	2.0	4	2.0	197	100.0
Quality of equipment	52	25.6	82	40.4	51	25.1	13	6.4	5	2.5	203	100.0
Quantity of equipment	56	27.3	78	38.0	49	23.9	15	7.3	7	3.4	205	100.0
Availability of needed courses	75	36.4	91	44.2	34	16.5	5	2.4	1	.5	206	100.0
Content of required courses outside major	61	33.0	88	47.6	33	17.8	3	1.6	0	.0	185	100.0
Usefulness of required courses outside major	63	33.9	70	37.6	49	26.3	4	2.2	0	.0	186	100.0

III. If you used any of the College services listed below, please rate the quality of service accordingly:

	Very Good		Good		Average		Poor		Very Poor		Total	
	Count	%	Count	%	Count	%	Count	%	Count	%	Count	%
Career Planning and Placement	33	42.3	30	38.5	13	16.7	1	1.3	1	1.3	78	100.0
Academic Transfer	36	47.4	30	39.5	6	7.9	3	3.9	1	1.3	76	100.0
Transfer Counseling	33	45.8	27	37.5	8	11.1	4	5.6	0	.0	72	100.0
Assessment and Testing	32	31.4	48	47.1	17	16.7	1	1.0	4	3.9	102	100.0
Learning Labs/Tutorial Services	43	39.1	46	41.8	17	15.5	1	.9	3	2.7	110	100.0
Library Services	60	43.8	54	39.4	21	15.3	1	.7	1	.7	137	100.0
Financial Aid/Veterans Affairs	52	41.3	41	32.5	23	18.3	5	4.0	5	4.0	126	100.0
Food Services	23	25.8	28	31.5	27	30.3	7	7.9	4	4.5	89	100.0
Registrars/Admission Office	67	36.6	85	46.4	26	14.2	3	1.6	2	1.1	183	100.0
Bookstore	56	28.6	89	45.4	39	19.9	10	5.1	2	1.0	196	100.0
Business Services	38	33.3	55	48.2	17	14.9	3	2.6	1	.9	114	100.0
Student Activities	22	28.2	29	37.2	21	26.9	4	5.1	2	2.6	78	100.0
Handicapped Services	15	39.5	14	36.8	5	13.2	3	7.9	1	2.6	38	100.0
Intramurals	12	35.3	14	41.2	6	17.6	1	2.9	1	2.9	34	100.0
Student Employment	15	36.6	14	34.1	8	19.5	4	9.8	0	.0	41	100.0
Development Education	23	42.6	20	37.0	10	18.5	0	.0	1	1.9	54	100.0

IV. Please rate each of the following items according to the effects your education at GCC had on your life:

	Very Good		Good		Average		Poor		Very Poor		Total	
	Count	%	Count	%	Count	%	Count	%	Count	%	Count	%
Obtaining my job	42	41.2	36	35.3	20	19.6	4	3.9	0	.0	102	100.0
Improving my performance on the job	50	43.5	44	38.3	20	17.4	1	.9	0	.0	115	100.0
Increasing my opportunities for job advancement	70	49.3	54	38.0	15	10.6	2	1.4	1	.7	142	100.0
Overall usefulness to my job	61	48.0	45	35.4	17	13.4	3	2.4	1	.8	127	100.0
Understanding the world in which I live	51	32.7	60	38.5	43	27.6	1	.6	1	.6	156	100.0
Communicating with others	64	39.3	66	40.5	33	20.2	0	.0	0	.0	163	100.0
Improving my thinking skills	73	43.7	69	41.3	24	14.4	1	.6	0	.0	167	100.0
Pursuing additional education	82	51.3	58	36.3	18	11.3	2	1.3	0	.0	160	100.0
Learning on my own	68	41.0	76	45.8	20	12.0	1	.6	1	.6	166	100.0
Improving my self-image	68	43.0	66	41.8	22	13.9	2	1.3	0	.0	158	100.0
Improving my performances as a citizen	63	42.9	52	35.4	32	21.8	0	.0	0	.0	147	100.0
Improving the quality of my life	78	47.0	63	38.0	21	12.7	3	1.8	1	.6	166	100.0

Program Completer and Graduate Survey 2004-2005

Good=Very Good and Good, Poor=Poor and Very Poor, No Opinion and Not Answered Removed

II. Please rate each of the following items according to how well they fulfilled your individual needs:

	Good		Average		Poor		Total	
	Count	%	Count	%	Count	%	Count	%
Quality of instruction	185	88.5	21	10.0	3	1.4	209	100.0
Grading/Testing	172	82.3	33	15.8	4	1.9	209	100.0
Instructor interest	186	89.0	21	10.0	2	1.0	209	100.0
Content of course(s) in major	176	85.0	27	13.0	4	1.9	207	100.0
Usefulness of course(s) in major	172	82.7	33	15.9	3	1.4	208	100.0
Class size	182	87.5	24	11.5	2	1.0	208	100.0
Laboratory components in courses	144	72.7	45	22.7	9	4.5	198	100.0
Helpfulness of lab supervisors	145	73.6	44	22.3	8	4.1	197	100.0
Quality of equipment	134	66.0	51	25.1	18	8.9	203	100.0
Quantity of equipment	134	65.4	49	23.9	22	10.7	205	100.0
Availability of needed courses	166	80.6	34	16.5	6	2.9	206	100.0
Content of required courses outside major	149	80.5	33	17.8	3	1.6	185	100.0
Usefulness of required courses outside major	133	71.5	49	26.3	4	2.2	186	100.0

III. If you used any of the College services listed below, please rate the quality of service accordingly:

	Good		Average		Poor		Total	
	Count	%	Count	%	Count	%	Count	%
Career Planning and Placement	63	80.8	13	16.7	2	2.6	78	100.0
Academic Transfer	66	86.8	6	7.9	4	5.3	76	100.0
Transfer Counseling	60	83.3	8	11.1	4	5.6	72	100.0
Assessment and Testing	80	78.4	17	16.7	5	4.9	102	100.0
Learning Labs/Tutorial Services	89	80.9	17	15.5	4	3.6	110	100.0
Library Services	114	83.2	21	15.3	2	1.5	137	100.0
Financial Aid/Veterans Affairs	93	73.8	23	18.3	10	7.9	126	100.0
Food Services	51	57.3	27	30.3	11	12.4	89	100.0
Registrars/Admission Office	152	83.1	26	14.2	5	2.7	183	100.0
Bookstore	145	74.0	39	19.9	12	6.1	196	100.0
Business Services	93	81.6	17	14.9	4	3.5	114	100.0
Student Activities	51	65.4	21	26.9	6	7.7	78	100.0
Handicapped Services	29	76.3	5	13.2	4	10.5	38	100.0
Intramurals	26	76.5	6	17.6	2	5.9	34	100.0
Student Employment	29	70.7	8	19.5	4	9.8	41	100.0
Development Education	43	79.6	10	18.5	1	1.9	54	100.0

Program Completer and Graduate Survey 2004-2005

IV. Please rate each of the following items according to the effects your education at GCC had on your life:

	Good		Average		Poor		Total	
	Count	%	Count	%	Count	%	Count	%
Obtaining my job	78	76.5	20	19.6	4	3.9	102	100.0
Improving my performance on the job	94	81.7	20	17.4	1	.9	115	100.0
Increasing my opportunities for job advancement	124	87.3	15	10.6	3	2.1	142	100.0
Overall usefulness to my job	106	83.5	17	13.4	4	3.1	127	100.0
Understanding the world in which I live	111	71.2	43	27.6	2	1.3	156	100.0
Communicating with others	130	79.8	33	20.2	0	.0	163	100.0
Improving my thinking skills	142	85.0	24	14.4	1	.6	167	100.0
Pursuing additional education	140	87.5	18	11.3	2	1.3	160	100.0
Learning on my own	144	86.7	20	12.0	2	1.2	166	100.0
Improving my self-image	134	84.8	22	13.9	2	1.3	158	100.0
Improving my performances as a citizen	115	78.2	32	21.8	0	.0	147	100.0
Improving the quality of my life	141	84.9	21	12.7	4	2.4	166	100.0

GCC Program Completer and Graduate Survey Percent of Responses Comparison

II. Please rate each of the following items according to how well they fulfilled your individual needs:

	2004-05	2003-04	2001-02	2000-01	2004-05	2003-04	2001-02	2000-01	2004-05	2003-04	2001-02	2000-01	2004-05	2003-04	2001-02	2000-01
	Very Good/Good				Average				Poor/Very Poor				No Opinion			
	%	%	%	%	%	%	%	%	%	%	%	%	%	%	%	%
Quality of instruction	89	83	92	84	10	15	7	15	1	2	2	1	0	0	0	0
Grading/Testing	82	75	86	78	16	22	13	21	2	2	1	1	0	0	0	0
Instructor interest	89	82	85	83	10	16	13	15	1	2	1	1	0	0	1	1
Content of course(s) in major	85	81	88	77	13	16	10	20	2	1	2	1	0	1	0	2
Usefulness of course(s) in major	82	79	85	75	16	17	13	20	1	2	1	3	0	1	1	2
Class size	88	69	82	78	12	25	17	19	1	5	1	2	0	1	1	2
Laboratory components in courses	70	56	67	49	22	25	21	25	4	10	5	16	4	10	7	10
Helpfulness of lab supervisors	70	57	68	53	21	26	18	24	4	7	6	10	5	11	9	13
Quality of equipment	64	52	64	58	25	30	24	25	9	12	9	13	2	7	3	4
Quantity of equipment	64	51	64	50	24	29	25	29	11	13	7	17	1	7	3	4
Availability of needed courses	80	65	75	63	16	27	19	25	3	6	4	10	1	1	1	3
Content of required courses outside major	73	59	63	52	16	25	23	37	1	2	4	3	10	14	10	9
Usefulness of required courses outside major	65	55	60	44	24	27	24	39	2	4	6	6	10	14	10	11

III. If you used any of the College services listed below, please rate the quality of service accordingly:

	2004-05	2003-04	2001-02	2000-01	2004-05	2003-04	2001-02	2000-01	2004-05	2003-04	2001-02	2000-01	2004-05	2003-04	2001-02	2000-01
	Very Good/Good				Average				Poor/Very Poor				No Opinion			
	%	%	%	%	%	%	%	%	%	%	%	%	%	%	%	%
Career Planning and Placement	48	45	34	19	10	10	14	6	2	3	6	6	40	42	46	69
Academic Transfer	55	44	50	22	5	14	13	5	3	4	3	4	37	38	34	69
Transfer Counseling	49	35	40	18	7	15	13	9	3	8	8	7	41	42	39	68
Assessment and Testing	62	46	45	23	13	21	15	13	4	1	3	4	21	32	37	61
Learning Labs/Tutorial Services(LAC)	61	48	57	29	12	14	17	18	3	4	3	4	25	34	23	48
Library Services (LRC)	73	70	61	54	13	15	25	17	1	5	5	4	12	11	10	25
Financial Aid/Veterans Affairs	57	49	53	43	14	18	12	13	6	16	13	5	22	17	23	39
Food Services	37	30	22	27	20	22	26	18	8	12	11	7	35	36	41	48
Registrar's/Admission Office	83	76	77	65	14	18	18	20	3	3	4	10	1	2	1	4
Bookstore	73	72	69	60	20	24	25	25	6	4	5	10	1	0	1	5
Business Services	63	56	62	35	12	17	14	16	3	4	6	3	22	24	18	46
Student Activities	40	33	36	17	17	19	14	11	5	1	3	5	38	47	46	67
Handicapped Services	26	16	15	4	4	6	5	2	4	4	4	4	66	73	77	91
Intramurals	24	14	12	4	6	8	4	4	2	1	5	5	69	76	80	88
Student Employment	26	18	19	10	7	9	9	6	4	2	4	2	63	71	68	82
Developmental Education	37	26	36	15	9	9	5	4	1	2	4	2	54	64	56	80

IV. Please rate each of the following items according to the effects your education at GCC had on your life:

	2004-05	2003-04	2001-02	2000-01	2004-05	2003-04	2001-02	2000-01	2004-05	2003-04	2001-02	2000-01	2004-05	2003-04	2001-02	2000-01
	Very Good/Good				Average				Poor/Very Poor				No Opinion			
	%	%	%	%	%	%	%	%	%	%	%	%	%	%	%	%
Obtaining my job	46	49	48	39	12	10	10	8	2	4	3	6	39	38	39	48
Improving my performance on the job	55	51	50	45	12	15	8	13	1	1	3	1	32	32	39	41
Increasing my opportunities for job advancement	70	61	61	49	8	18	10	11	2	3	3	3	20	19	25	38
Overall usefulness to my job	62	60	56	45	10	15	13	17	2	1	3	1	26	23	28	38
Understanding the world in which I live	62	54	61	41	24	26	21	27	1	4	4	5	12	16	14	27
Communicating with others	72	65	71	59	18	27	19	25	0	1	3	3	9	6	7	14
Improving my thinking skills	78	71	79	69	13	23	14	17	1	1	1	2	8	4	6	12
Pursuing additional education	78	74	79	68	10	14	11	13	1	1	1	2	11	10	10	18
Learning on my own	80	71	76	67	11	24	15	20	1	1	2	1	8	5	7	12
Improving my self-image	74	62	73	62	12	21	10	19	1	2	3	1	13	14	14	18
Improving my performances as a citizen	66	53	61	42	18	25	15	25	0	1	1	2	16	21	23	32
Improving the quality of my life	77	64	73	57	11	23	11	22	2	2	3	3	9	10	13	18

**GCC Program Completer and Graduate Survey Percent of Responses Comparison
(No opinion and not answered removed)**

II. Please rate each of the following items according to how well they fulfilled your individual needs:

	2004-05	2003-04	2001-02	2000-01	2004-05	2003-04	2001-02	2000-01	2004-05	2003-04	2001-02	2000-01
	Very Good/Good				Average				Poor/Very Poor			
	%	%	%	%	%	%	%	%	%	%	%	%
Quality of instruction	89	83	92	84	10	15	7	15	1	2	2	1
Grading/Testing	82	76	86	78	16	22	13	21	2	2	1	1
Instructor interest	89	82	85	83	10	16	13	15	1	2	1	1
Content of course(s) in major	85	83	88	77	13	16	10	20	2	1	2	1
Usefulness of course(s) in major	83	81	85	75	16	18	13	20	1	2	1	3
Class size	88	70	82	78	12	25	17	19	1	5	1	2
Laboratory components in courses	73	62	69	53	23	28	22	27	5	11	7	20
Helpfulness of lab supervisors	74	64	72	59	22	29	20	27	4	8	10	16
Quality of equipment	66	56	66	60	25	32	25	26	9	13	11	15
Quantity of equipment	65	55	66	52	24	31	26	30	11	14	9	19
Availability of needed courses	81	66	75	65	17	28	19	26	3	6	4	12
Content of required courses outside major	81	68	67	56	18	29	25	39	2	3	8	7
Usefulness of required courses outside major	72	64	64	48	26	31	26	41	2	5	10	10

III. If you used any of the College services listed below, please rate the quality of service accordingly:

	2004-05	2003-04	2001-02	2000-01	2004-05	2003-04	2001-02	2000-01	2004-05	2003-04	2001-02	2000-01
	Very Good/Good				Average				Poor/Very Poor			
	%	%	%	%	%	%	%	%	%	%	%	%
Career Planning and Placement	81	77	52	47	17	18	23	20	3	5	24	34
Academic Transfer	87	70	64	50	8	23	20	19	5	7	17	32
Transfer Counseling	83	61	56	46	11	25	21	23	6	14	24	35
Assessment and Testing	78	88	59	47	17	30	22	25	5	2	17	28
Learning Labs/Tutorial Services(LAC)	81	72	67	49	15	21	22	28	4	7	13	24
Library Services (LRC)	83	78	65	64	15	16	27	22	1	6	9	14
Financial Aid/Veterans Affairs	74	59	63	59	18	22	17	21	8	19	23	21
Food Services	57	47	38	47	30	34	34	28	12	19	27	27
Registrar's/Admission Office	83	78	77	67	14	19	18	21	3	4	4	12
Bookstore	74	72	69	62	20	24	25	26	6	4	5	12
Business Services	82	73	70	53	15	22	18	25	4	5	14	21
Student Activities	65	62	54	43	27	37	23	24	8	1	21	31
Handicapped Services	76	61	45	40	13	24	20	20	11	15	34	40
Intramurals	76	61	44	40	18	36	20	22	6	4	37	41
Student Employment	71	62	47	42	20	30	23	22	10	8	32	34
Developmental Education	80	71	58	47	19	25	16	20	2	4	26	34

IV. Please rate each of the following items according to the effects your education at GCC had on your life:

	2004-05	2003-04	2001-02	2000-01	2004-05	2003-04	2001-02	2000-01	2004-05	2003-04	2001-02	2000-01
	Very Good/Good				Average				Poor/Very Poor			
	%	%	%	%	%	%	%	%	%	%	%	%
Obtaining my job	76	78	64	59	20	16	18	18	4	6	19	26
Improving my performance on the job	82	76	66	61	17	22	16	21	1	2	19	17
Increasing my opportunities for job advancement	87	75	71	65	11	22	15	19	2	4	13	19
Overall usefulness to my job	83	79	68	61	13	20	19	25	3	2	15	17
Understanding the world in which I live	71	64	67	51	28	31	24	32	1	5	10	15
Communicating with others	80	70	73	65	20	29	20	28	0	2	5	9
Improving my thinking skills	85	74	81	73	14	24	15	19	1	2	3	6
Pursuing additional education	88	83	83	76	11	16	13	17	1	2	5	10
Learning on my own	87	74	78	71	12	25	16	22	1	1	4	5
Improving my self-image	85	72	79	70	14	25	13	23	1	3	9	9
Improving my performances as a citizen	78	67	71	54	22	32	20	31	0	1	11	14
Improving the quality of my life	85	72	79	65	13	26	14	26	2	3	9	11

GCC Program Completer and Graduate Survey Percent of Responses Comparison

I. What is your Primary objective in attending Grayson County College?

	2004-05	2003-04	2001-02	2000-01
	%	%	%	%
Not Answered	9	5	NA	NA
Associate Degree	61	61	66	63
Credits for transfer	5	5	14	10
Certificate of Completion	14	12	11	7
Personal development	3	1	2	6
To get a job	3	3	3	1
To improve skills for current job	1	0	0	0
To get a better job	2	11	4	12
To maintain a license	0	0	1	1
Other	1	0	1	1

V. Please answer the following questions about your work experiences and the influence of your education at GCC:

1) What is your current employment status?

	2004-05	2003-04	2001-02	2000-01
	%	%	%	%
Employed	60	65	61	77
Full-time military	2	0	0	0
Unemployed seeking employment	30	21	20	9
Unemployed not seeking employment	9	14	19	14

If you are employed, is your job related to the courses or program you have completed at GCC?

	2004-05	2003-04	2001-02	2000-01
	%	%	%	%
Yes, it is directly or closely related	48	48	51	48
No, it is only remotely or not at all related	52	52	49	52

Please indicate when you first secured employment in your current field:

	2004-05	2003-04	2001-02	2000-01
	%	%	%	%
Do not yet have a job	40	29	36	20
Before I began my GCC coursework	27	29	28	39
After I had completed a few courses at GCC	15	18	15	16
During my last term at GCC	5	13	10	10
After I received my degree at GCC	13	11	10	16

If your occupational area is not related to the courses or program you have completed at GCC, please indicate each reason which best applies:

	2004-05	2003-04	2001-02	2000-01
	%	%	%	%
Not sufficiently qualified for a job in my field	21	21	20	26
Preferred to work in another field	8	13	10	12
Found a better paying job in another field	6	2	1	6
Could not find a job in my field	6	12	6	9
Worked previously in field, but changed	4	1	1	2
Not currently employed	35	32	39	23
Other	20	19	23	23

How would you rate the availability of jobs in your occupational area?	2004-05	2003-04	2001-02	2000-01
	%	%	%	%
Very Good	23	27	35	34
Good	33	33	34	32
Average	33	31	23	22
Poor	8	6	6	10
Very Poor	3	4	2	2

How satisfied are you with your current salary, considering your level of training and responsibility?	2004-05	2003-04	2001-02	2000-01
	%	%	%	%
Very Satisfied	13	19	9	13
Somewhat Satisfied	38	29	45	48
Somewhat Dissatisfied	15	14	5	8
Very Dissatisfied	5	12	10	13
Not currently employed	29	27	31	16

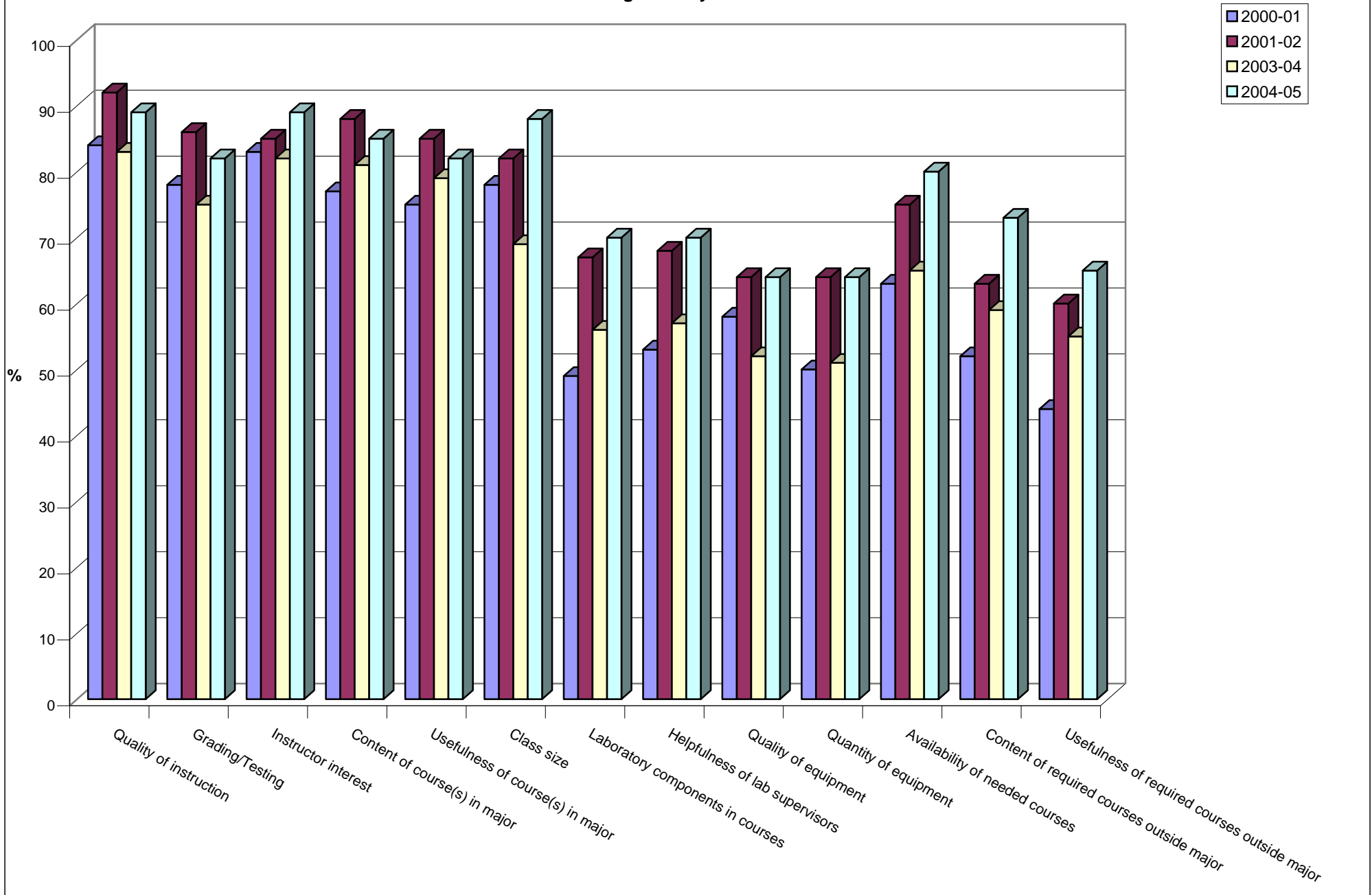
VI. Please answer the following personal questions:

Sex?	2004-05	2003-04	2001-02	2000-01
	%	%	%	%
Male	29	25	33	45
Female	71	75	67	55

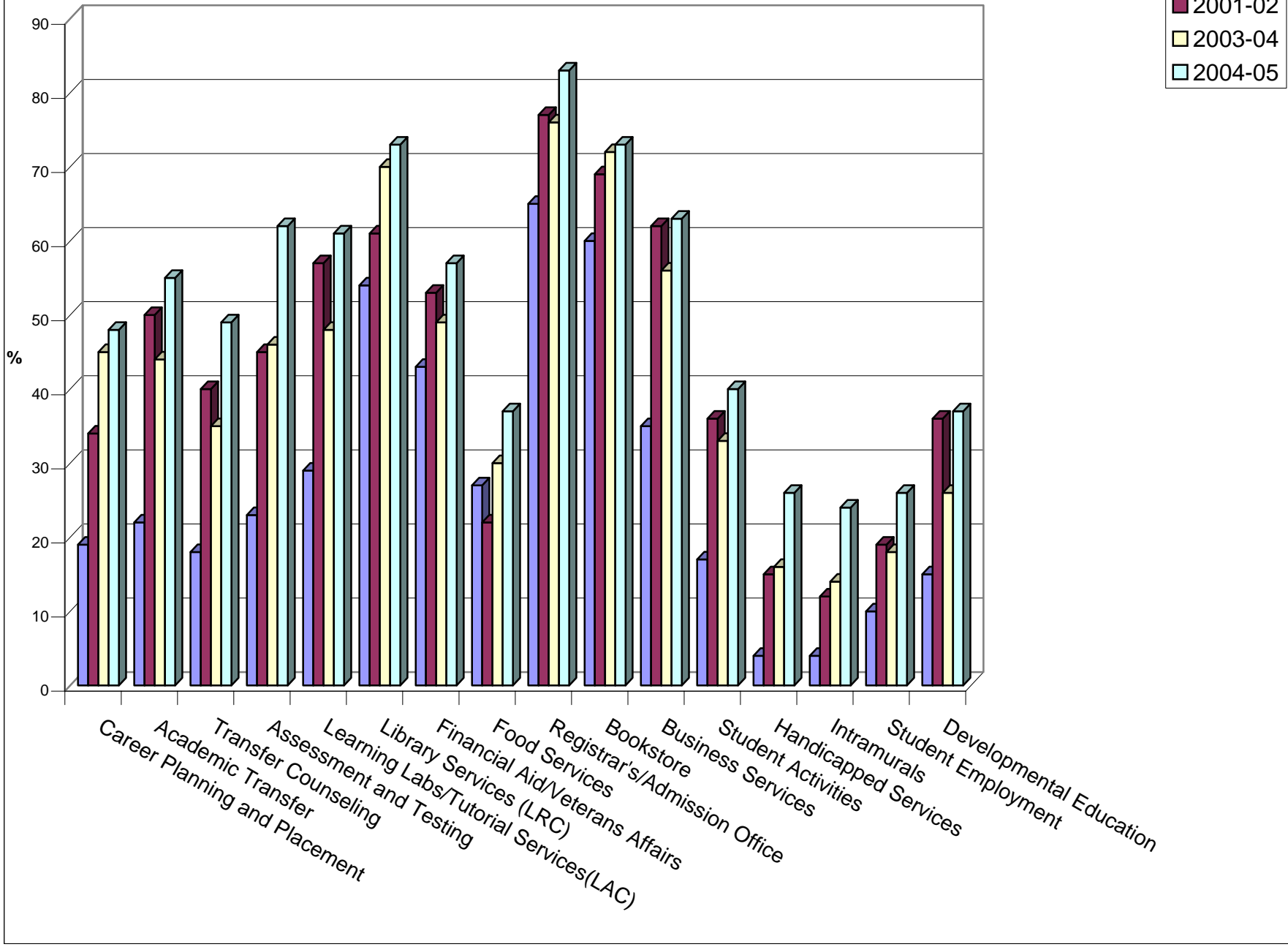
Race?	2004-05	2003-04	2001-02	2000-01
	%	%	%	%
American Indian	3	4	2	1
Black	11	11	7	4
Asian	0	2	1	2
Hispanic	5	8	4	2
White	82	78	86	91

Age?	2004-05	2003-04	2001-02	2000-01
	%	%	%	%
18 to 22	40	33	41	28
23 to 25	5	13	9	13
26 to 30	8	12	11	14
31 to 40	21	20	16	19
41 to 50	18	16	17	18
51 to 60	9	6	5	8
61 or over	0	1	1	0

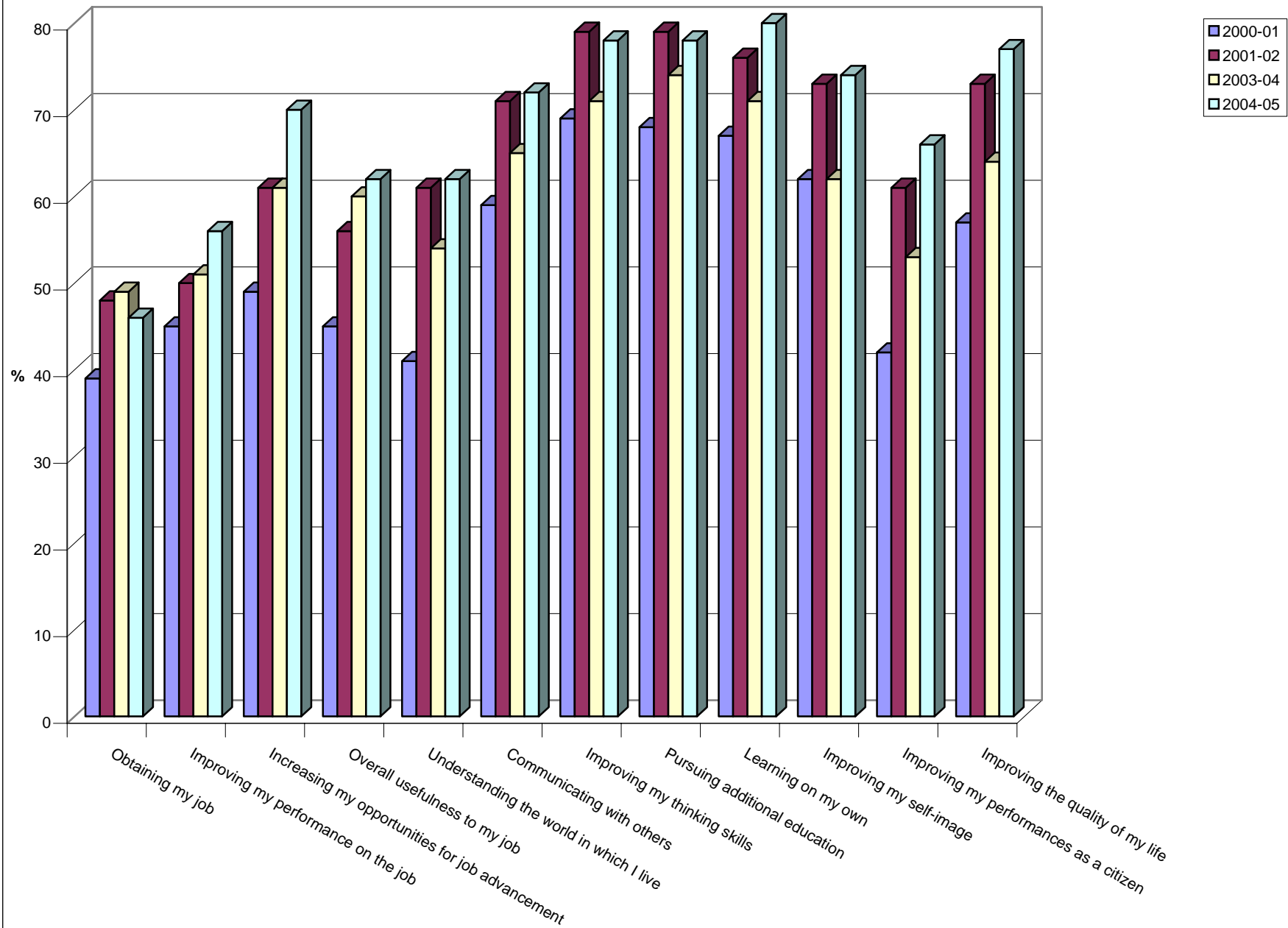
Instructional Ratings of Very Good/Good 2000-2005



Student Service Ratings of Very Good/Good 2000-2005



Life Skills Ratings of Very Good/Good 2000-2005



**Grayson County College
Program Completer and Graduate Student Survey Comments – 2005**

I. What was your PRIMARY objective in attending Grayson County College? Other (Specify):

Associate Degree of Nursing (2)
Bachelor Nursing
To change careers

V. If your occupational area is not related to the courses or program you have completed at GCC, please indicate each reason which best applies. Other (Specify):

Already employed in another field
Continuing Education
Dislocated worker-retraining for new field
Got my cosmetology license at GCC and wanted business to help with owning my own business and for a back up degree
Had job before taking classes
Haven't looked in my field
Haven't received word from applications
I have found that having an associates degree is no help at all
I needed more education in my field
Just job to pay for school
Just working part time to get through school
My choice at this time
Need associates to get job.
Need to be qualified first
Not done with school
Presently working as CSR but hope to find other employment.
Pursuing degree
Still Employed
Tutoring
Waiting for the right job opening
Wanted to put me in sales or customer sales. What do you do with a business and mgt. Degree?
Will start working in my field soon
Work part time to attend school
Working to get through school

VII. Please indicate the greatest strength of GCC:

Ability to have the necessary equipment and knowledge for advancing in further education
Ability to work with Workforce Texoma in re-training displaced workers.
Able to be on a personal level with the teachers.
Accessible, well rounded academics
Adding instructors
Affordability
Affordability and flexibility of schedules on classes offered.
Affordable and provides quality education
Affordable prices, location
Affordable tuition for working adults wanting to pursue educational goals
All the staff were willing and waiting to help with anything. There were always opportunities for one-on-one help.
An extremely educated and caring staff, dedicated to the goals of their students and making their lives successful.
Auto body, welding, theatre and nursing
Business Dept. Dr Margaret Payne. She and others show a true interest in you as a person. They try very hard to insure your success and give praises where needed.
Campus is laid out to able people to find the class they need and internet classes.
Cheap courses and small classes
Classes to fit my schedule
Close to home, Internet and evening classes.
Closeness to my community
Convenience and affordability
Convenient to home, affordable
Convenient; many opportunities to further education without having to travel to other colleges.
Counselors that understand the real world and work with you to obtain your goals.
Dental assisting program and Mrs. G. Kirk
Diversity and seems to me instructors went out of their way to help anytime, and administration

During my two years at Grayson, I found its greatest strength to be in the small class size. The schedules allowed for classes to be taken at our convenience because so many were offered, and the fewer students to a class made it possible to have more personal attention from the instructors.

Educators and location, wonderful dean!

Enthusiasm of VIT and Enology professors, reputation of Munson enology center, vision and leadership of Dr. Renfro

Evening class schedules, really dedicated instructors, and testing center

Everyone is always there to help. The counselors have been a great help to me and my professors have been great.

Excellent instructors combined with state of the art training (modular training and computers) make for top-notch schooling.

Excellent teaching staff that is always readily available to assist with any need.

Faculty and Professors (2)

Faculty knowledge

Financial Aid needs people skills

Financial help for students who cannot afford a degree

Flexibility and availability of classes and instructors value=price=affordability

Flexibility of scheduling classes

Flexibility, Faculty, and Format

Friendliness of all instructors I know

GCC had a good amount of classes offered.

GCC has some super instructors very knowledgeable, friendly

GCC was an inexpensive and convenient way for me to complete my education

GCC willingness to help anyone with furthering his or her education.

GCC, works with all age levels, which to me is great.

GCC's greatest strength would probably be in its faculty. This comment is towards the technical programs especially. The technical fields teach more real world application and knowledge than many of the academic courses could ever offer.

Good teachers, good price

Grayson County College was a great start in my college career. The greatest strength of Grayson County College is the staff/faculty's respect and courtesy that makes you feel welcome.

Great atmosphere, excellent teachers.

Great Professors and an excellent value for an even greater education.

Great size, great instructors

Great staff (2)

Great student focused programs.

Great teachers

Greatest strength is its local and low cost

HART

Helpful staff Caring Instructors and Professors

Helping people prepare for the job fields

Helping people that wants to learn and continue their education

High quality caring teachers.

High quality educators and having hours a person working days can attend

High quality teachers.

I am very impressed with the theater department

I feel that the strength of GCC is its great mass of determined students striving to achieve their life goals and all of the many teachers who actually care to help and guide the students through every step of the way.

I had much strength in academics. I was able to keep a good GPA. I always felt I had a good understanding of the material

I have had the most wonderful experience with all my teachers.

I like the night class schedules. For someone what works full time and has a family, a four class, once a week made it possible for further education in my life. Thank you

I liked the smaller classes and each instructor I had was willing and able to work with the students one on one if needed.

I think the teachers are your greatest strength. My teachers were great; they took the time to help everyone in the class.

I would have to say the personal connection between the teachers and students.

If I need help someone is there to get it for me

Instructor's willingness to work with students and their schedules. The instructors in the business building are great.

Instructors (3)

Instructors and faculty very helpful

Instructors and kindness

Instructors and the curriculum

Instructors who have extensive personal knowledge in their field

Instructors, staff and maintenance

Internet classes are the greatest strength of GCC.

Internet courses

It is very affordable

It's more like high school, so its not such a major jump from high school to a four year school.

Less stressful environment of a larger campus.

Location. From what I've learned, the nursing program puts out good nurses.

LVN program, science program

Modular instruction is one of the best methods of instructions that GCC introduced. It helped me. GCC listens to the students and teach the subject materials very well.

Most instructors I had were helpful when a need for a more in depth explanation of assignments/materials.

Most of the instructors within the program were very helpful through out the learning process

Night classes and internet classes

Now that a campus is opened in VA availability of courses is great.

Nursing (LVN) programs are excellent

One on one communication and flexibility; teachers were great with dealing with issues and certain misunderstandings.

Providing the latest technology and most experienced instructors to teach curriculum

Quality of faculty particularly, Mrs. Sherrie Mercer, Mr. Casey Qualls, Mr. Gurak,

Service to the students.

Small atmosphere-more one on one with teacher and student

Small campus and one on one: student to teacher.

Small class sizes (3)

Small classes and convenience

Small classes and lots of teacher, student interaction

Small classes, classes being held at various times and locations; internet classes

Small classes, excellent teaching staff

Small classes, instructors are personable.

Small classrooms and atmosphere filled with educators and faculty really care to see their students succeed.

Small classrooms, good teacher to student ratio.

Small, economical, less formal

Smaller classes and better personal assistance

Smaller classrooms helped with instructor/student relationship.

Spanish department

Special needs center, tutoring

Teachers (3)

The admissions do a great job helping students graduate.

The assistance provided to students in all areas. I was always able to get my questions answered and received prompt responses to questions.

The campus and the ease of finding your classes.

The connectivity of the teaching staff for as the teaching criteria and the learning basic that the instructors continuously enforce.

The cost was very affordable for me. I received no financial aid; all cost were out of pocket. I was happy that GCC tuition was affordable so that I was able to attend.

The counselors are very helpful-especially Barbara Malone! The classes are small enough to have great teacher/student interaction.

The counselors, they are so helpful. Especially Mrs. Malone. The small class sizes are also very helpful

The faculty and staff

The greatest strength at GCC is the teachers in the CJ department. They make sure you get in a career you like and let you know of all the options that are out there; everywhere in the U.S. they make sure you continue on.

The greatest strength is the variety of educational opportunities offered at GCC

The greatest strength of GCC is that it gives students the chance to take courses that will almost always transfer to other universities.

The greatest strength of GCC is that the instructors would try to help you any way that they could.

The greatest strength that this college has is its staff. Not just the teacher or office personnel its everyone that help make this and what it is today nothing but the best.

The greatest strength would have to be the instructors, most of them. They are very helpful and really want to see you succeed. They are willing to give the students extra help time.

The level of commitment from the instructors

The number of courses and degree plans

The nursing programs really leave much to be desired-someone should watch it more carefully and not be afraid to lose the poor nursing instructors.

The people. The people is what makes GCC the school of choice.

The professors and teachers are available when one needs them; during school and after school hours. They also had a fair grading policy/system.

The Professors are very helpful

The professors. They try their hardest to help you any way they can. Also the counselors are great.

The quality and caring of the instructors at GCC

The small classes and the availability of needed courses.

The small classes and the way you are prepared for a 4-year university

The small classrooms

The small size, the dedicated faculty but most importantly, the welcoming spirit that everybody has.

The teachers (some) who actually care about what they teach.

The teachers and directors

The teachers are caring and committed to not only teaching but mentoring

The teachers are great; they listen to whatever problems a student may have. They follow certain schedule and stick with it and help a student with their needed help.

The teachers are very knowledgeable and show interest in what they teach (most of them). Also, the small classroom size makes it possible for one-on-one help when needed.

The teachers were willing to help you in anyway that they could

The theatre department and humanities

The times given at which you can attend classes.

The willingness of instructors (Dr. Jean Sorenson, Mary-Yetta McKelva, Ron Roberts, Stanley Henderson, John Gurak, and Casey Qualls) to do what is necessary to help a very diverse body of struggling students and further enlighten those who are naturally apt in their respective subjects.

They got a good program, and good teacher

Trades programs

Value for the dollar, smaller classes, and several great instructors

Variety of courses offered

Very affordable, updated education, scholarships available, friendly staff

Working with each individual student one on one with counseling and helping out with the degree plan

Working with people to achieve their educational goals.

You have helped me to get an education that I have admired for years with the assistance of financial aid. Thank You!

VIII. Please indicate the greatest weakness of GCC:

A few instructors have academic arrogance and look down on students that have a different major than instructor or are in the first semester of the subject.

AC and heating

Attitudes people have in the office when just asking a simple question.

Availability of class

Because GCC is a public school, it cannot take any action against its greatest weakness, student apathy. Most students want their "C" so they can move on. This hindered my ability to learn.

Being misinformed on test requirements for my major.

Better way to serve students on registration days, for counselors office and bookstore

Bookstore manager and prices.

Business Office

Cannot honestly assess-would have to know more information about the college. Could use more certificate programs.

Class availability

Construction going on during classes causing interruptions.

Construction of buildings and classrooms

Construction, heat and air

Construction, heating and air condition

Disability access

Elevator/ newer one and making of one more automatic door for handicap

Evaluation of staff. I feel that the faculty should be evaluated in class rather than use student surveys alone. Most college students know nothing of how a teacher should teach effectively. _____ is an intelligent person but not an effective teacher. He needs education classes.

Facilities, student body

Financial Aid

Financial aid office, snack bar personal too slow

Food and cost of meal plan

Getting motivated to attend class

Getting paperwork processed within the time frame guidelines. When all paperwork that is required by students has been turned in on time. Having only one person to correct a problem that is the instructor's fault.

Grades received on internet grade sheet seemed to differ on one occasion from transcript.

I don't see a weakness. All my instructors were great! Counseling services were excellent as were my dealing with the Business office, Bookstore and library.

I feel that the greatest weakness of space as far as nursing is being not with the addition of the new health sciences building.

I felt that the college has become more lenient on their grading system.

I have personally had no problems, but have heard others stating that classes they've taken don't show up on their unofficial transcript and causes them to worry.

I really didn't see much wrong; I really enjoyed it there.

I received conflicting information from financial aide personnel resulting in my loss of funds for assistance.

I think that GCC was not very organized at Registration

I think that the greatest weakness of GCC is the unfriendly faculty members. The people in the business, registrar, and financial aid offices are incredibly unfriendly and not very helpful. A smile and controlled attitude go a long way!

I think there should be more scholarship opportunities and that they should put out more information on how to apply for scholarships and what available. Also, the bookstore needs a new system.

Instructors

It almost feels just like high school, especially since they still call roll.

It lacks the funding it deserves.

Lab, bookstore

Lack of lab equipment.

Lack of technology. Most of my classes did not use the internet technology of Web CT.

Location, would like more facilities in Grayson County.

Long lines in the bookstore

Loosing paper work

Math dept.

Modular activities

Modular programs.

Need better equipment in CAD classes. More and better stuff for CAD classes, more money for CAD equipment.

Need more career contacts with potential employers

Need more lab assistance in HVAC

Need more professors and bring diversity

No evening physics class

No parking due to construction, no handicapped places which caused me to get a ticket. Quality of this survey poor. No circles to fill in properly

No structure, cannot access to the gym unless you are an athlete. Dorms are really nasty and uncomfortable, so is the food at the cafeteria

No transportation, extremely limited parking

No weakness comes to mind, I had a great time at GCC

Not as many classes and degrees offered

Not enough activities, this college needs more student involvement. Interact with Texomaland (expand)>

Not enough required classes for fall, summer, spring

Not enough support by professors and staff in student events and activities

Not have a competent Janitor at the west campus c/o welding dept-pretty sad when this student has to come to the main campus and "borrow" paper towel rolls for our restrooms.

Not having a four year or higher program

Not having enough teachers in class instead of the internet

Not many Data Processing courses. Also, courses and content seems to be slow to change.

Not offering all classes during the daytime hours and at the main campus.

Nursing tests should be re-vamped I pulled from a test bank because the questions were absolutely horrible.

Obsolescence of facilities

Office management- seems disorganized

On campus availability of satellite course study. Students that wish to gain a BS or MS degree. For example, take courses at Grayson and it be considered the same as University choice in state coursework.

Parking (7)

Parking and smoking policy

Probably my attendance

Seems very unorganized at times, need more efficiency in keeping up with personal files.

Sharing instructors with the Van Alstyne campus affected which classes were offered at which campus, and some instructor availability for questioning.

Some classes not offered in evening or internet, come classes not offered every semester.

Some internet programs.

Some of the trades class rooms need renovation

Teachers do not correspond well with students, especially with internet classes

Technology

Terrible parking- no smoking area for adults (out of the weather)

That there is not a very strong music program.

The AD Nursing program-They are not interested in graduating good nurses but good test takers for their rating. I believe as important nursing is that the director of the program should be only the director of the program not welding computers etc.

The administration. Most of the time I would go in to the administration and they would act put out. Business office in particular

The cafeteria food needs work. There needs to be a better variety of foods.

The construction

The cosmetology bldg. Is in poor shape. It hinders the students and clients thoughts of how clean and unsanitary the bldg. Is. The appearance to us in not good.

The cost of books! Then their re-sale values.

The director of the cosmetology department was not qualified for her position. There were many times when we did not have products needed for customers.

The few teachers who are self-concerned or just don't really act like they care.

The food/cost of the lunch room (salad bar is great)

The greatest weakness of GCC is the hour drive from my house.

The greatest weakness of Grayson County College is that it is only a two-year college.

The greatest weakness was that there was not enough parking for the amount of students attending GCC.

The greatest weakness would be the THEA requirements when transferring form another school. My transcript was read wrong twice so I took the THEA and the zero-level classes, because no one took the time to actually read my transcript correctly. I wasted 12 hrs of zero-level class time because of the THEA advisors error.

The lack of availability of classes need or wanted.

The lack of schedule times for classes.

The library hours are not conducive to learning

The parking is terrible

The registration process.

The staffs in some of the areas were very unhelpful.

The technology of classroom needs improvement better boards for teachers, better computers for students and more quiet study areas are needed

There is no student gymnasium, only the athletes can use the gym. The dorm and cafeteria need lot of improvement. The classrooms need renovation. The library needs to be open longer.

There was not a variety in classes. Some were only offered once a semester.

Too bad its not a university for four year degrees- It's a wonderful school.
 Too far for me to drive
 Too much construction
 Too noisy in library when you are trying to study
 Use of funds towards some the so-called "improvements" made around the campus.
 We, on the west campus are disappointed that the president and officials of the college have not paid us a visit. We don't know them.
 Wish evening classes were offered in summer sessions.
 Your equipment

IX. Please list all GCC courses in which you received a grade of "C" or better which did NOT transfer to another college:

0320 Elementary Algebra, 0330 Intermediate
 ABDR 1519 Basic Metal Repair, Math 0115 math Lab 1, ABDR
 1541 Structure Analysis & DMG 1, ABDR 1542 Strut. Analysis &
 DMG 2, ABDR 2531 Structure Analysis & DMG 3, ABDR 2535
 Structure Analysis DMG 4, ABDR 2537 Structure Analysis &DMG 5
 Algebra I
 All classes (4)
 Business Math, Business Communication I and II
 Business Principles
 Conversational Spanish
 COSC 1102-Internet Research
 Cosmetology
 DAAC (All)
 Did not transfer to another institution
 Don't know (5)
 Don't now yet, but think they all transferred
 Drugs in Society, basic counseling skills, group counseling
 Elementary Algebra, Intermediate Algebra, Remedial Writing
 Hart Courses, Basic Elect., Refrigerator. Fundamentals, Heat
 Pumps/Commercial, Advanced AC/Gas and Elect. Heat
 Have not transferred credits to another school yet
 Haven't been to another college
 Health Science for Health works
 I did not receive any C's.
 In process of applying
 Internet Pharmacology
 MATH 1325 Precalculus for Bus., BUSI 1301 Business Principles.
 My advisor accepted what the records dept. didn't: Math 1350 sub.
 For Math 1523, Math 1351 sub. For Math 1533
 None (3)
 Not applicable to me. I am still a student at GCC
 Not transferring to another college at this time
 Paramedic course
 Psyc 2314 Child and Adolescent, Psychology
 Remedial Math
 SOCI-1301, DRAM 1120, 1121,1310,1330,2351, SPAN
 1411,1412, MATH 1314, COSC 1301, ENGL 2332
 State and local Government
 Still waiting on acceptance letters.
 Theatre, auto body, welding, reading 101
 They all transferred (2)
 Welding
 Welding principles, HART Principles, HART 1442-Heat, HART
 Commercial Ref.

X. Name of the school which did not accept these credits.

TAMU-Commerce
 SOSU
 Texas State
 University of Texas at Dallas
 SOSU
 SOSU
 University of North Texas
 A and M Commerce
 SMU
 TWU –Denton
 SOSU
 Haven't tried to transfer
 University of Dallas
 N/A

XI. Do you feel you obtained your primary objective at GCC?

Absolutely, I wanted to get the feel of college and get associate degrees so I could transfer to a university.
 Absolutely, Thanks all
 Definitely, I feel that I have gained a strong background in Nursing. I felt that the freshman year provided a better education than the sophomore year over-all.
 Definitely, through GCC I obtained my college degree from an American Educational Institution, which made my dream come true.
 Hopefully all courses will transfer to SOSU if not then, no.
 I did receive the certificate that I was pursuing but it was not what I really wanted. I wanted to do the pharmacy tech program, but it is not one that is recognized under the NAFTA careers.

I feel I obtained my primary goal at GCC with the help of Dwayne Barber. My major is Criminal Justice; I plan to go the SOSU. Mr. Barber helped me figure out where to go after GCC; also, with help of guest speakers and all the different job offers he told us about. I obtained my primary goal and accomplished others that was not in focus.

I sure will when I complete the Technician program in HVAER.

Most definitely

Most definitely, I had such a life-changing experience in which I have matured and strengthened my overall intelligence.

Mostly, I would love to have more advance art classes and English classes.

My primary objective at GCC was to transition form a home school environment into that of a university. Grayson County College helped me accomplish that goal, and then it helped me set new long-term goals that I am currently pursuing.

No, because I changed my major from nursing to Elementary Education.

No, I feel I didn't take full advantage of the opportunities that were available to me, via the theatre department.

No, I missed graduating from the AD Nursing program by 4/10 of a point two days before graduation. I have 4 years of loans to pay for and nothing to show for it. The ABM is only a last resort.

No, I will become a nurse but I told everyone who asked to run to another nursing school at least until _____ leaves.

Not sure yet

Oh yeah, I learned a lot while I was here they got a good program

Partially-originally wanted to be a dental hygienist.

Pretty much so

So far I have and I bet I will all the way through

Still working toward goal and have LVN license and certification and now plan to transition to associates degree of nursing.

Yes (91)

Yes and I am continuing to attend the college to obtain another degree.

Yes and I thank you all

Yes and I will be back

Yes and including additional duties for janitorial training

Yes I do (3)

Yes! I am on my way to UTD!

Yes, absolutely

Yes, almost finished with my nursing degree.

Yes, and hope that GCC will be able to help if I wish to further my education

Yes, became a better Air conditioning and Heating Technician

Yes, but not to the fullest

Yes, completion of Certificate and the opportunity to find a job in a field different from past job experience.

Yes, could have done better in some areas

Yes, great experience. I am glad I returned to school to get my degree. Thanks Grayson County College.

Yes, I am just happy I stayed the course.

Yes, I completed my associates degree

Yes, I feel as though I have a very balanced education, which will assist me with future endeavors.

Yes, I feel I achieved everything I was after at GCC

Yes, I feel I have achieved my primary objective here, which was to get an education and to learn about me.

Yes, I feel that GCC helped to raise my level of education greatly. It (GCC) also helped to broaden my career opportunities and chances for advancement.

Yes, I feel that I have obtained my primary objective at GCC. At Grayson, I completed a majority of by basics, and also completed courses n the Criminal Justice discipline. Grayson really prepared me for a four-year school by having cool staff and faculty that really wanted to teach and help students learn.

Yes, I feel that I obtained my primary objective at GCC.

Yes, I feel very good about the education I received at GCC. I'm ready to go on now that I have my basics done. I appreciate all the help I received in planning my goals.

Yes, I got a good base from which to build on and I have improved on my confidence and self-esteem accordingly.

Yes, I got my associates degree

Yes, I got the credits I needed.

Yes, I got to finish all my basics without trying to struggle so much. Every class that I needed fit all together.

Yes, I have a job.

Yes, I have completed the two-year Government sponsored retraining program and am ready to return to the workforce.

Yes, I have wanted to further my education and GCC gave me the opportunity.

Yes, I maintained a 3.5 GPA or higher

Yes, I now feel like I can find a job in my chosen field. Thanks

Yes, I obtained my degree within a year after I graduated high school because of GCC's availability in high school and during the summer.

Yes, I received my associate degree and all classes transferred.

Yes, I received my diploma.

Yes, I received my nursing license.

Yes, I still will stay to get m y bachelor degree n Nursing but I have obtained an Associates Degree

Yes, I wanted to achieve my associates

Yes, I was able to finish my basics very quickly and now I can move on and get my bachelors degree at a 4 year university.

Yes, I was afraid of having to go back to school at such a late age. I was afraid that I could not keep up. Once deeply into the studies, I found out I could do anything

Yes, I was taught the basic knowledge needed for my future.

Yes, I will be taking some business courses at Grayson and then will transfer to Texas A&M Commerce to get my business degree.
Yes, I will obtain my associates degree and pursue my bachelor's degree form another college.
Yes, it helped me prepare for bigger and better things.
Yes, it took me twice as long, but I think it was worth it!
Yes, it was exactly what I planned!
Yes, learning has become something at this time in my life that given me the push that I've needed for quite some time. This experience has been great.
Yes, my goal was to graduate with my associates degree and transfer to a four year university
Yes, my goal was to learn how to work on cars in a body shop. Everything I learned in this class will help me to start my own body shop.
Yes, my objective was to complete my basic coursework while having the time to focus on choosing my major. Attending Grayson has been an opportunity to explore possibilities. Upon graduation, with two successful years with me. I am confident to be transferring to complete my schooling.
Yes, my primary objective was to receive an Associates of Science Degree and transfer to Texas A&M Commerce to major in Special Education
Yes, partly, but I will go else where to finish I don't want to attend a program that makes you feel like you wasted your time going through the LVN program.
Yes, thank you very much!
Yes, the teachers really helped me. I passed state board cosmetology and that was my primary objective.
Yes, this school has allowed me to grow as an independent college student who is still able to seek professional one on one help.
Yes, to be a nurse.
Yes, very much. I wanted an affordable efficient two year degree
Yes, with the exception that I'm receiving a General Associates Degree rather than an Ass. Degree in Business. The math dept. at Grayson is a problem. I felt the classes were geared towards very recent students not those who were returning to college after may years.